

Installation instructions
for
Cambridge Audio 650BD regionfree modification

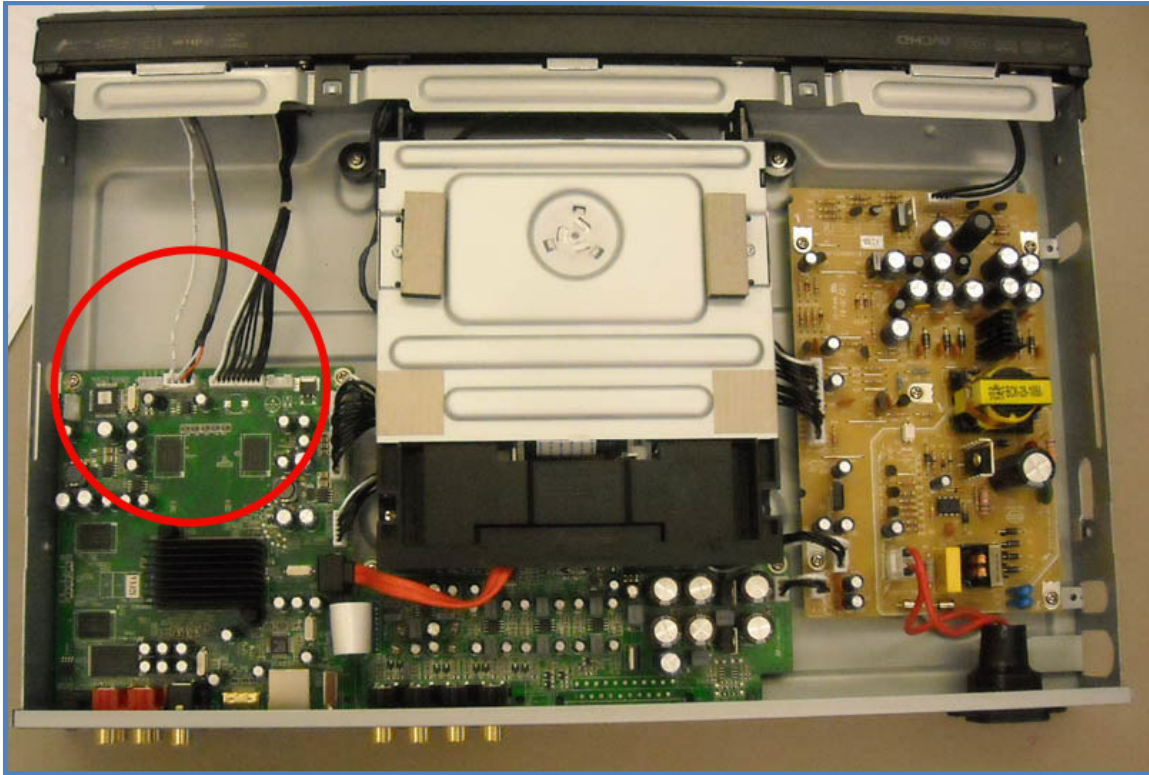


Figure 1

1

Disconnect the mains cable, and remove the top plate of the player. Spread the back lower corners of the top cover while lifting the rear of the top cover through 30°- 40°. Carefully pull the cover free from the front panel. Note the area of installation, marked with the red circle.

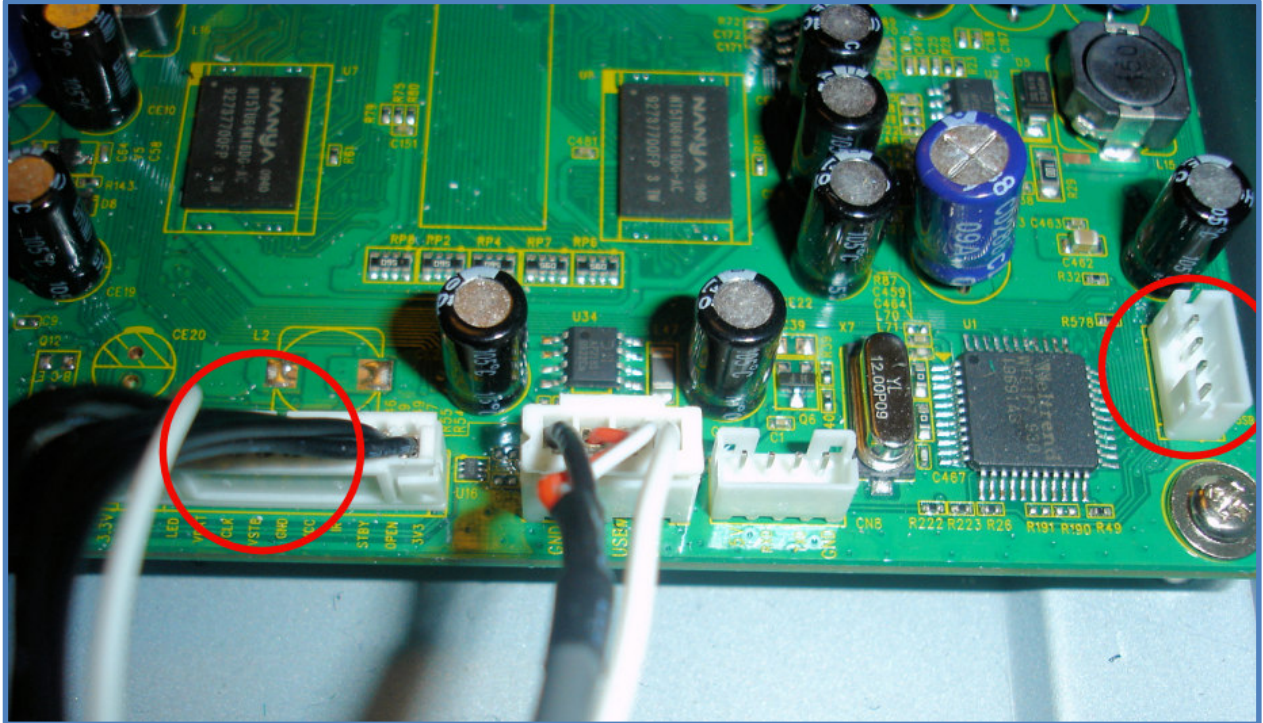


Figure 2

2

Disconnect the large (10 pin) black cable (going from the front panel to the main board.) Insert the large (10 pin) cable from the regionfree kit to the main board connector, where the black cable was inserted. Also insert the smaller (4 pin) cable into the main board connector. The two connectors are marked with red.

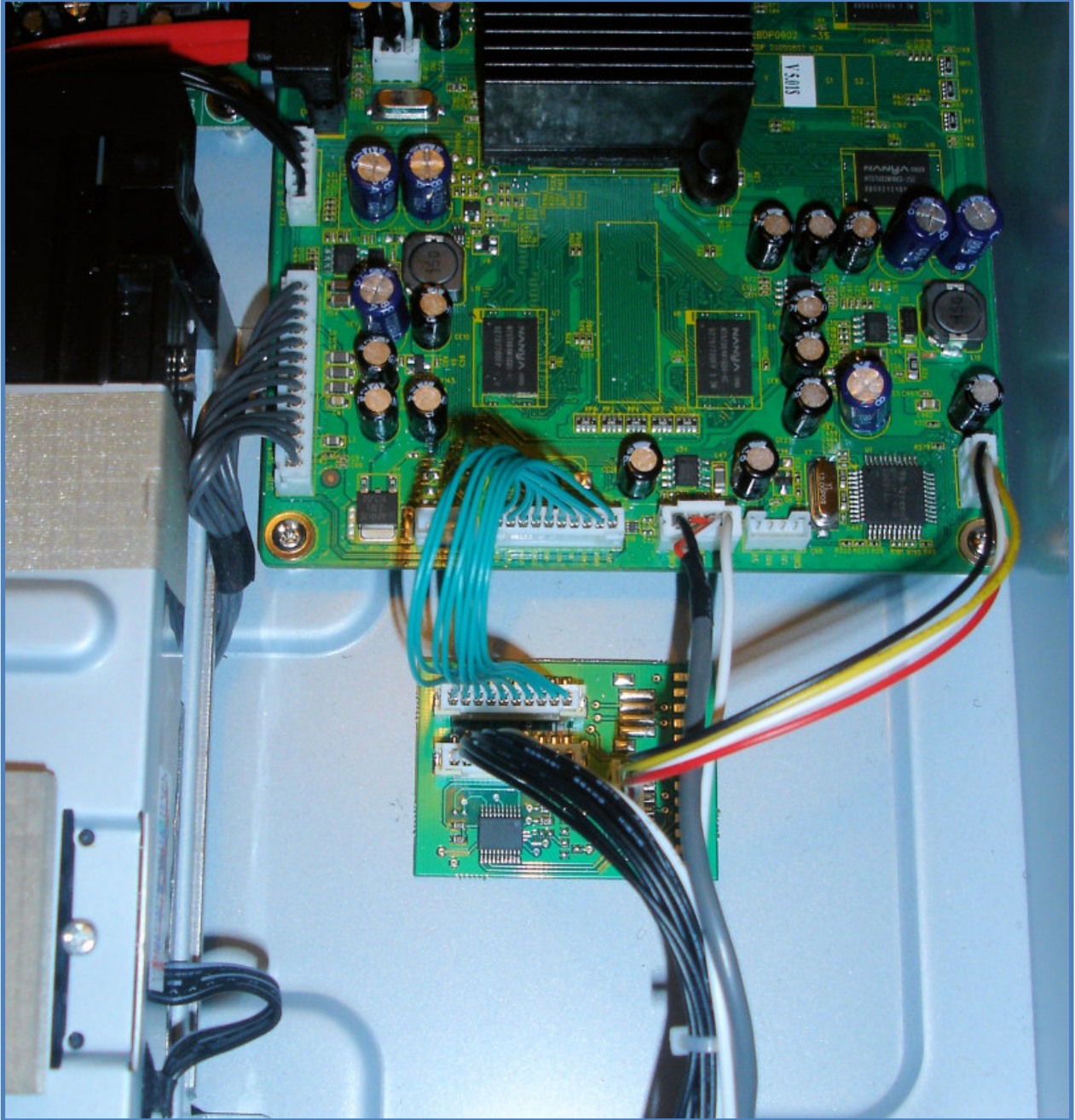


Figure 3

3

Peel off the cover off the sticky pads on the backside of the kit and attach to the players chassis, as shown in the picture. Now attach the large and small cable as mentioned in step 2, and plug the -previously removed- black front panel cable into the region kit. All cables can only fit one way round. Check you have them correct before applying any force to seat the plugs.

Note that actual cable colors delivered with the kit may differ from the picture.

How to use the mod

By default, your bluray player is now region free for DVD. To set the bluray region to A, B or C, please press "1", "2" or "3" on the remote when the player is in standby.

The player will automatically power on, when "1", "2" or "3" is pressed.

To disable the automatic power on, press the blue button on the remote once. To enable automatic power on again, press the yellow button once.

To select a specific DVD region, press green button followed by a number from "0" to "6". For automatic all region free - select "0".